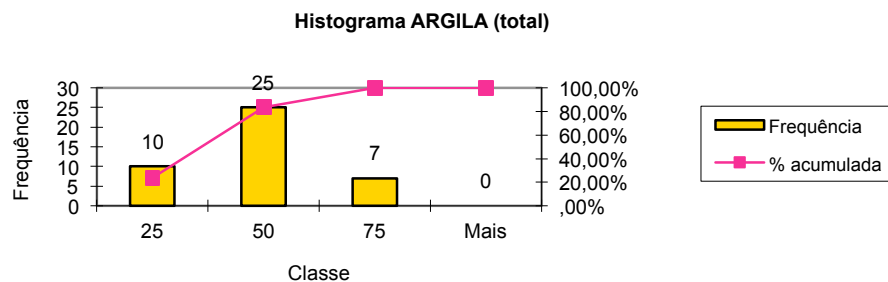
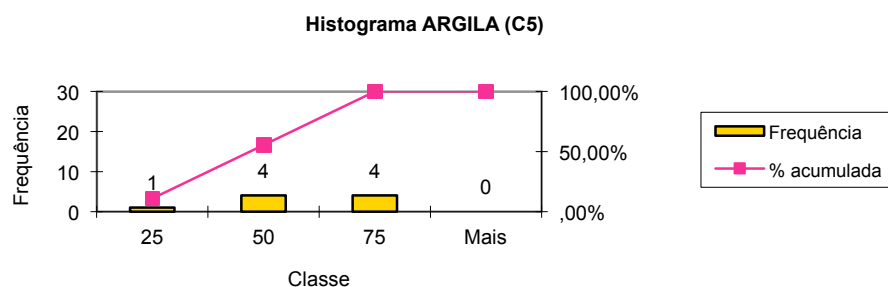


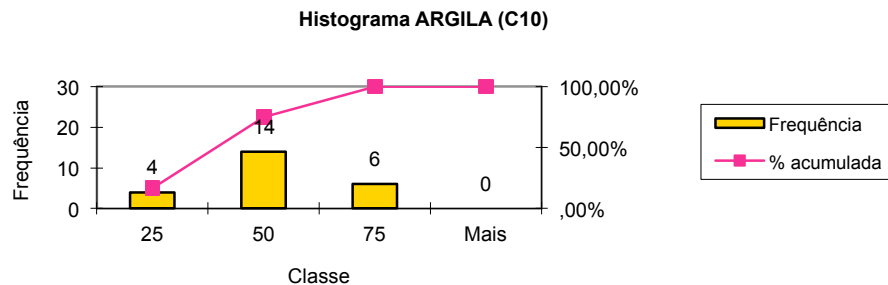
Classe	Freq	% Ac	% Rel
25	10	23,81%	23,81%
50	25	83,33%	59,52%
75	7	100,00%	16,67%
Mais	0	100,00%	0,00%



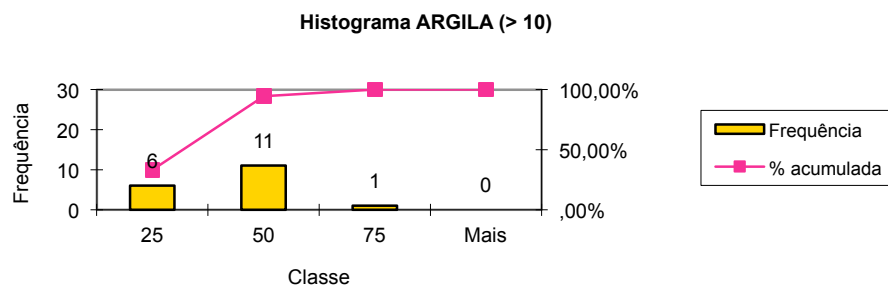
Classe	Freq	% Ac	% Rel
25	1	11,11%	11,11%
50	4	55,56%	44,44%
75	4	100,00%	44,44%
Mais	0	100,00%	0,00%



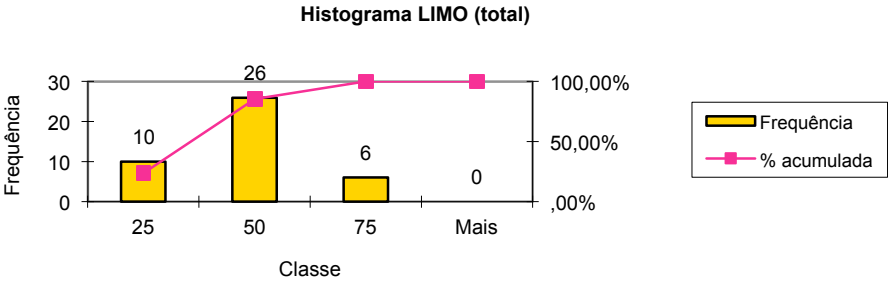
Classe	Freq	% Ac	% Rel
25	4	16,67%	16,67%
50	14	75,00%	58,33%
75	6	100,00%	25,00%
Mais	0	100,00%	0,00%



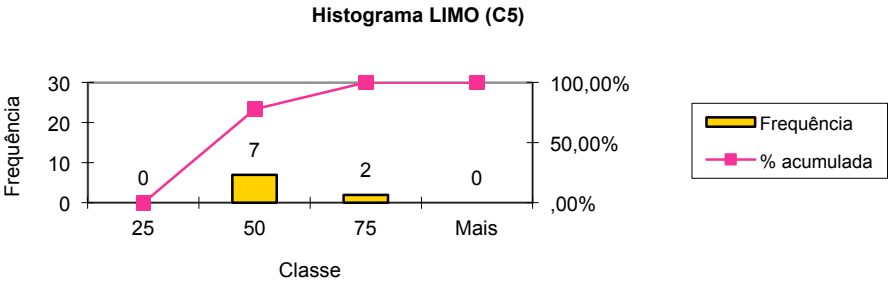
Classe	Freq	% Ac	% Rel
25	6	33,33%	33,33%
50	11	94,44%	61,11%
75	1	100,00%	5,56%
Mais	0	100,00%	0,00%



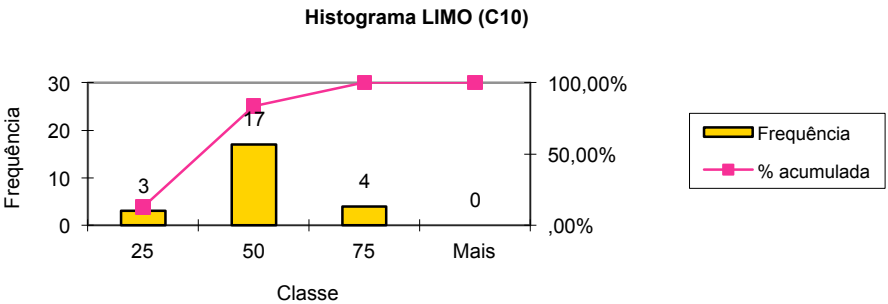
Classe	Freq	% Ac	% Rel
25	10	23,81%	23,81%
50	26	85,71%	61,90%
75	6	100,00%	14,29%
Mais	0	100,00%	0,00%



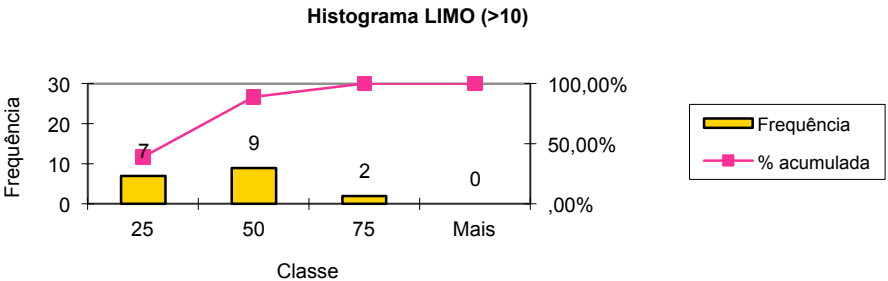
Classe	Freq	% Ac	% Rel
25	0	,00%	,00%
50	7	77,78%	77,78%
75	2	100,00%	22,22%
Mais	0	100,00%	0,00%



Classe	Freq	% Ac	% Rel
25	3	12,50%	12,50%
50	17	83,33%	70,83%
75	4	100,00%	16,67%
Mais	0	100,00%	0,00%

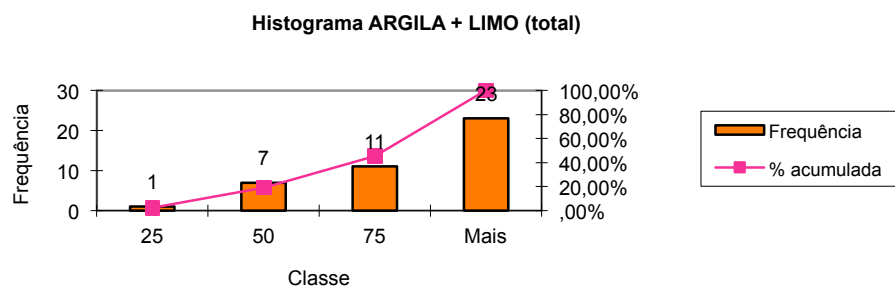


Classe	Freq	% Ac	% Rel
25	7	38,89%	38,89%
50	9	88,89%	50,00%
75	2	100,00%	11,11%
Mais	0	100,00%	0,00%



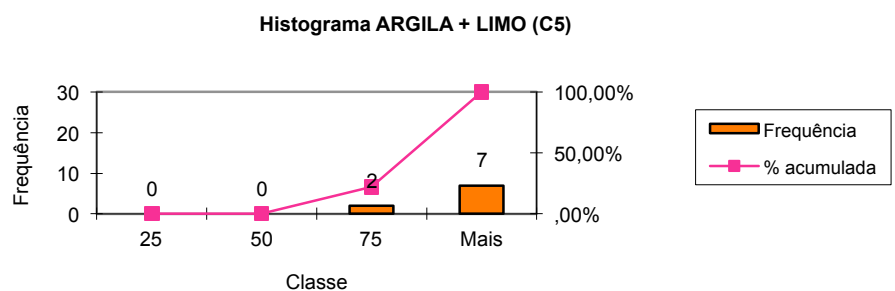
Classe	Freq	% Ac	% Rel
25	1	2,38%	2,38%
50	7	19,05%	16,67%
75	11	45,24%	26,19%
Mais	23	100,00%	54,76%

A



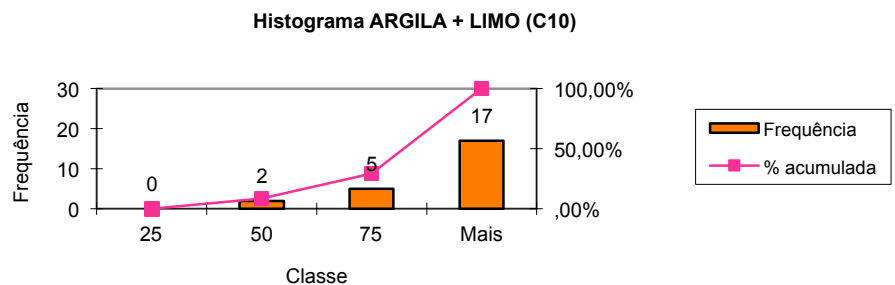
Classe	Freq	% Ac	% Rel
25	0	,00%	,00%
50	0	,00%	0,00%
75	2	22,22%	22,22%
Mais	7	100,00%	77,78%

B



Classe	Freq	% Ac	% Rel
25	0	,00%	,00%
50	2	8,33%	8,33%
75	5	29,17%	20,83%
Mais	17	100,00%	70,83%

C



Classe	Freq	% Ac	% Rel
25	1	5,56%	5,56%
50	5	33,33%	27,78%
75	6	66,67%	33,33%
Mais	6	100,00%	33,33%

D

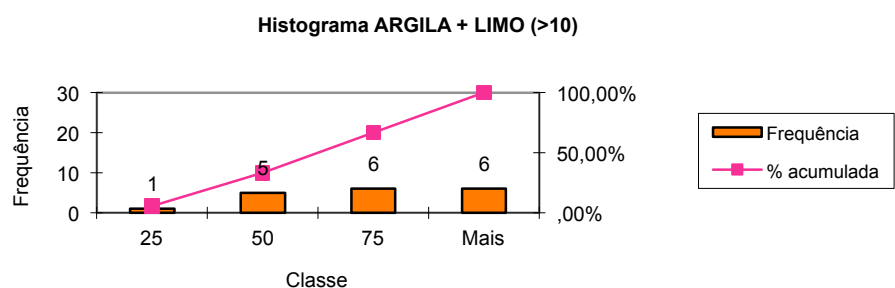
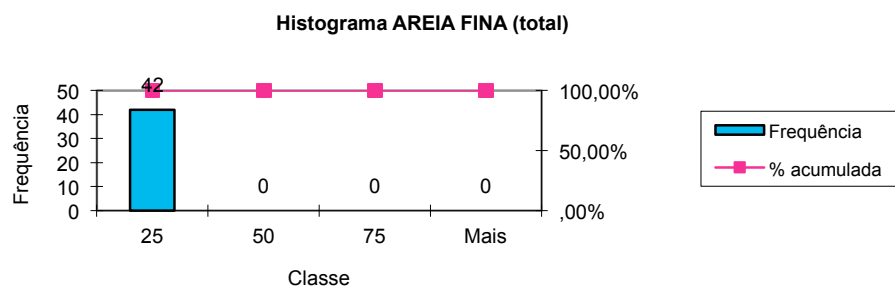
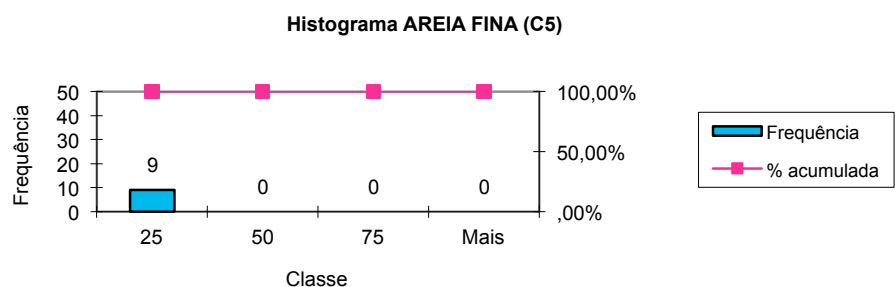


Figura 44

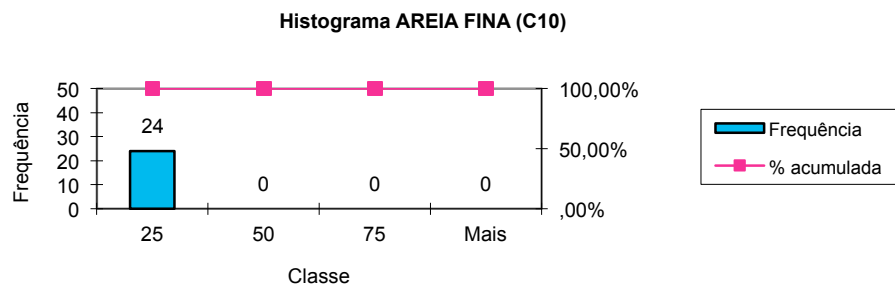
Classe	Freq	% Ac	% Rel
25	42	100,00%	100,00%
50	0	100,00%	0,00%
75	0	100,00%	0,00%
Mais	0	100,00%	0,00%



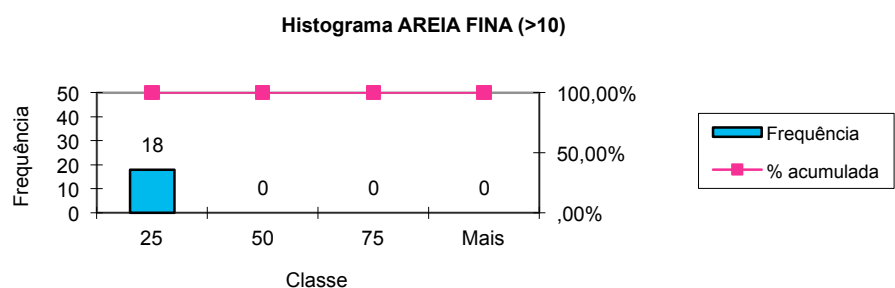
Classe	Freq	% Ac	% Rel
25	9	100,00%	100,00%
50	0	100,00%	0,00%
75	0	100,00%	0,00%
Mais	0	100,00%	0,00%



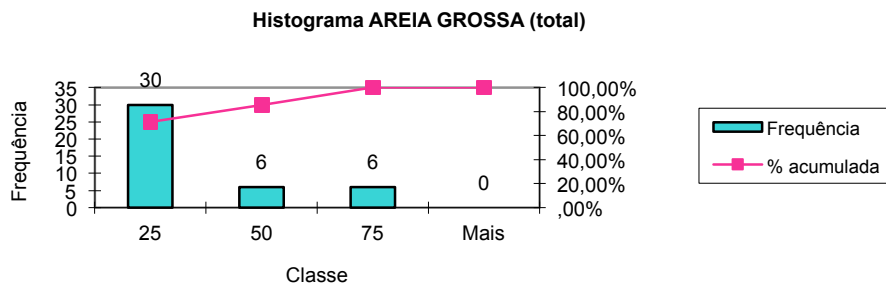
Classe	Freq	% Ac	% Rel
25	24	100,00%	100,00%
50	0	100,00%	0,00%
75	0	100,00%	0,00%
Mais	0	100,00%	0,00%



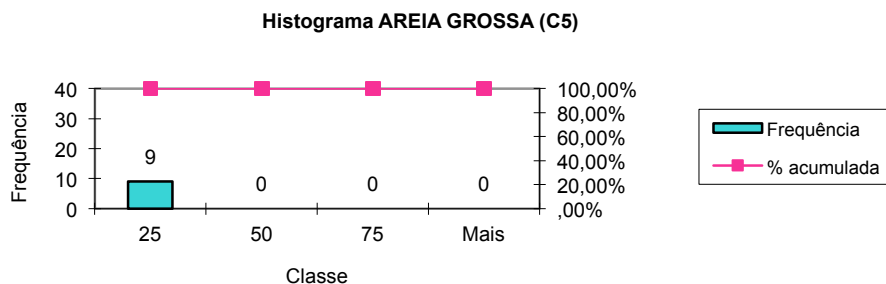
Classe	Freq	% Ac	% Rel
25	18	100,00%	100,00%
50	0	100,00%	0,00%
75	0	100,00%	0,00%
Mais	0	100,00%	0,00%



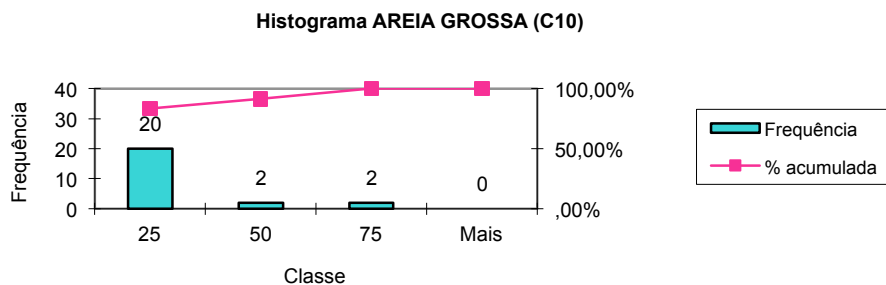
Classe	Freq	% Ac	% Rel
25	30	71,43%	71,43%
50	6	85,71%	14,29%
75	6	100,00%	14,29%
Mais	0	100,00%	0,00%



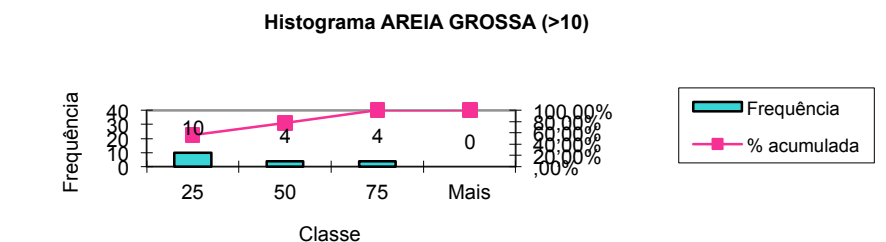
Classe	Freq	% Ac	% Rel
25	9	100,00%	100,00%
50	0	100,00%	0,00%
75	0	100,00%	0,00%
Mais	0	100,00%	0,00%



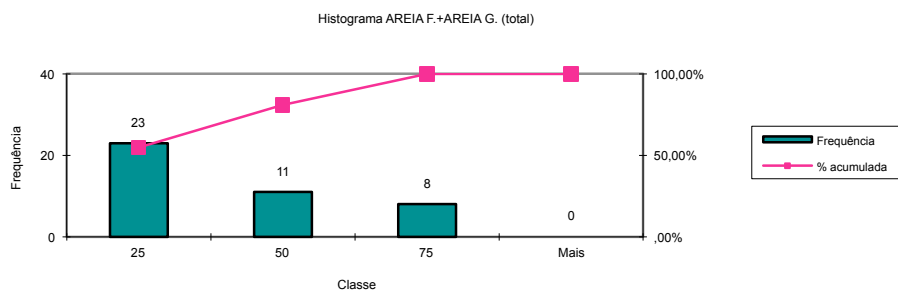
Classe	Freq	% Ac	% Rel
25	20	83,33%	83,33%
50	2	91,67%	8,33%
75	2	100,00%	8,33%
Mais	0	100,00%	0,00%



Classe	Freq	% Ac	% Rel
25	10	55,56%	55,56%
50	4	77,78%	22,22%
75	4	100,00%	22,22%
Mais	0	100,00%	0,00%

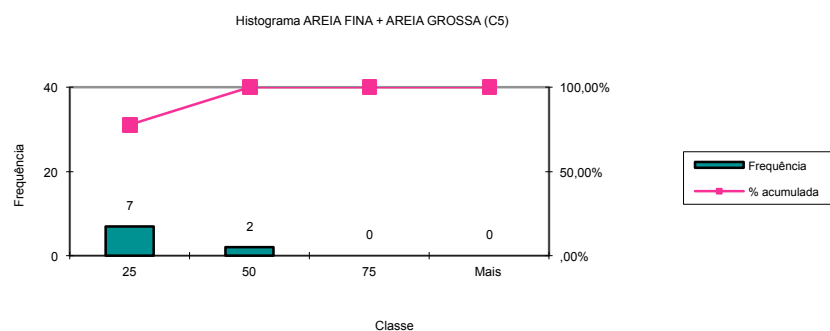


Bloco	Frequência	% acumulada	Relativa
25	23	54,76%	54,76%
50	11	80,95%	26,19%
75	8	100,00%	19,05%
Mais	0	100,00%	0,00%



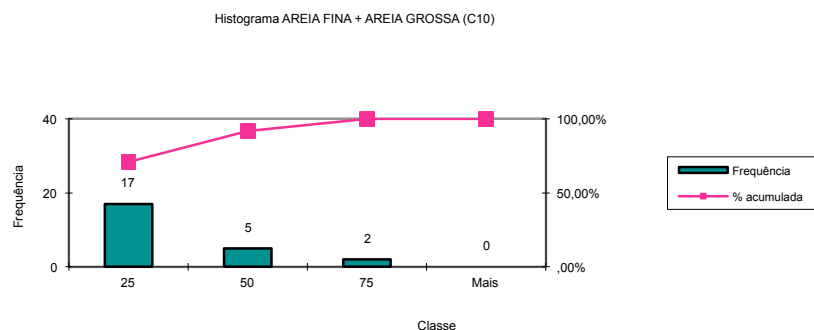
A

Bloco	Frequência	% acumulada	Relativa
25	7	77,78%	77,78%
50	2	100,00%	22,22%
75	0	100,00%	0,00%
Mais	0	100,00%	0,00%



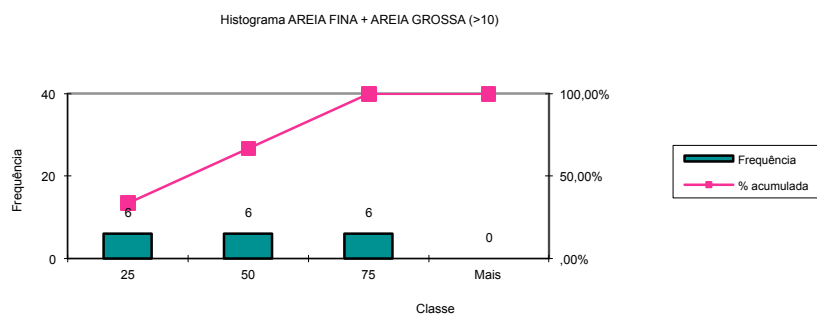
B

Bloco	Frequência	% acumulada	Relativa
25	17	70,83%	70,83%
50	5	91,67%	20,83%
75	2	100,00%	8,33%
Mais	0	100,00%	0,00%



C

Bloco	Frequência	% acumulada	Relativa
25	6	33,33%	33,33%
50	6	66,67%	33,33%
75	6	100,00%	33,33%
Mais	0	100,00%	0,00%

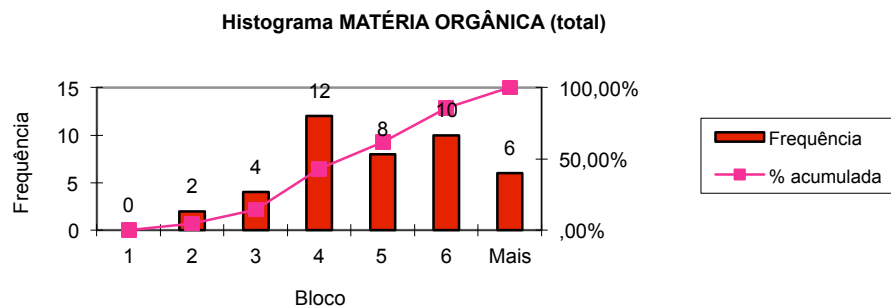


D

Figura 45

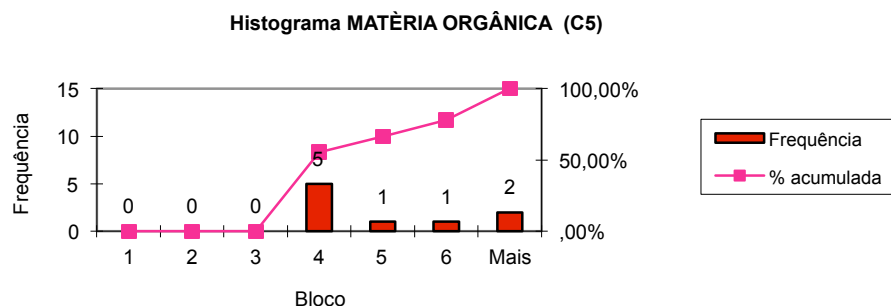
Bloco	Frequência	% acumulada	Relativa
1	0	,00%	,00%
2	2	4,76%	4,76%
3	4	14,29%	9,52%
4	12	42,86%	28,57%
5	8	61,90%	19,05%
6	10	85,71%	23,81%
Mais	6	100,00%	14,29%

A



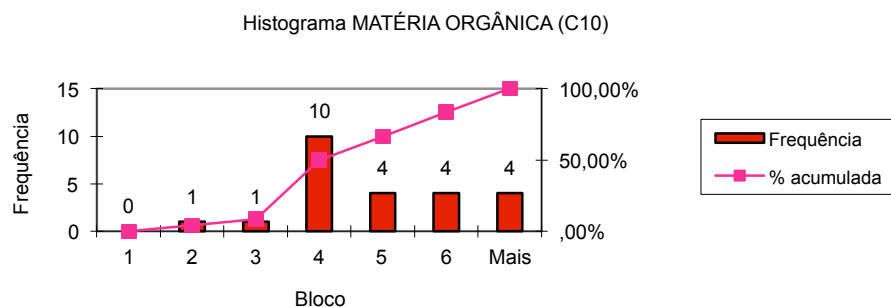
Bloco	Frequência	% acumulada	Relativa
1	0	,00%	,00%
2	0	,00%	0,00%
3	0	,00%	0,00%
4	5	55,56%	55,56%
5	1	66,67%	11,11%
6	1	77,78%	11,11%
Mais	2	100,00%	22,22%

B



Bloco	Frequência	% acumulada	Relativa
1	0	,00%	,00%
2	1	4,17%	4,17%
3	1	8,33%	4,17%
4	10	50,00%	41,67%
5	4	66,67%	16,67%
6	4	83,33%	16,67%
Mais	4	100,00%	16,67%

C



Bloco	Frequência	% acumulada	Relativa
1	0	,00%	,00%
2	2	8,70%	8,70%
3	4	26,09%	17,39%
4	2	34,78%	8,70%
5	6	60,87%	26,09%
6	6	86,96%	26,09%
Mais	3	100,00%	13,04%

D

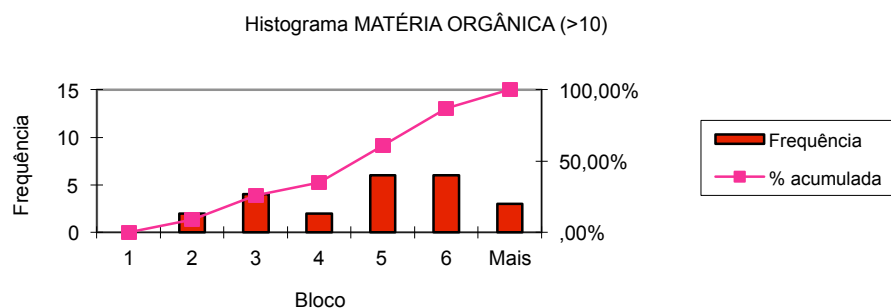
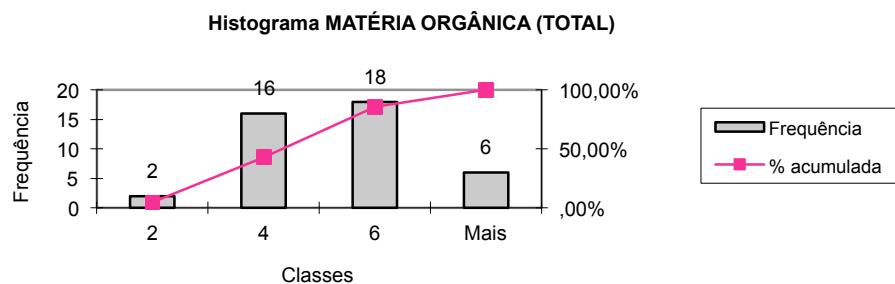
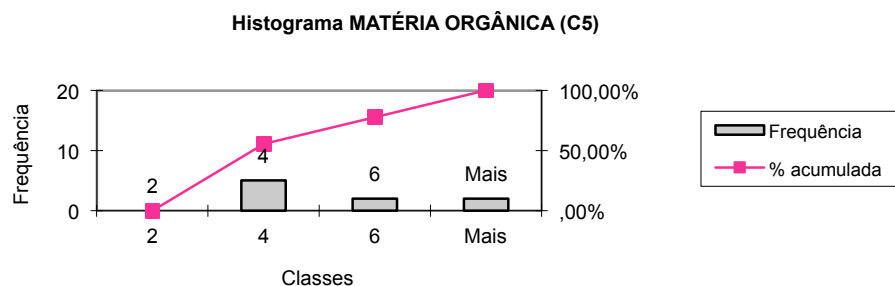


Figura 46

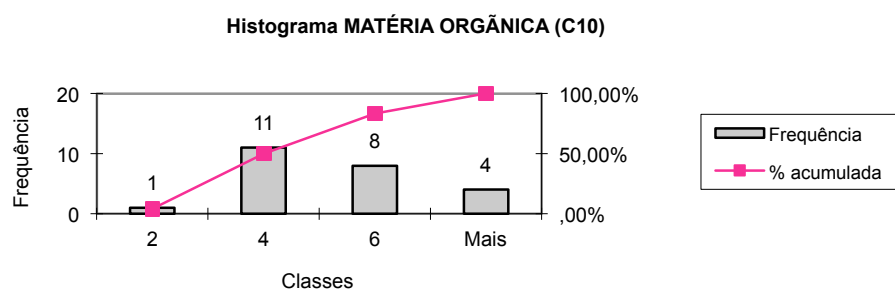
Bloco	Frequência	% acumulada	% relativa
2	2	4,76%	4,76%
4	16	42,86%	38,10%
6	18	85,71%	42,86%
Mais	6	100,00%	14,29%



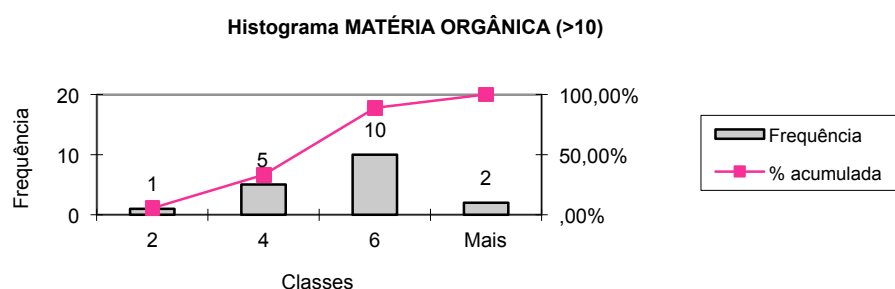
Bloco	Frequência	% acumulada	% relativa
2	0	,00%	,00%
4	5	55,56%	55,56%
6	2	77,78%	22,22%
Mais	2	100,00%	22,22%



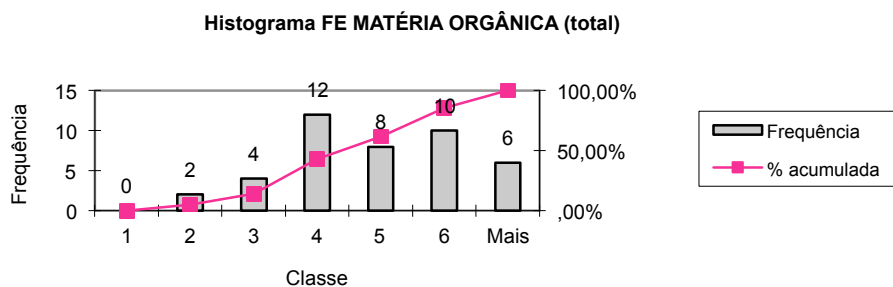
Bloco	Frequência	% acumulada	% relativa
2	1	4,17%	4,17%
4	11	50,00%	45,83%
6	8	83,33%	33,33%
Mais	4	100,00%	16,67%



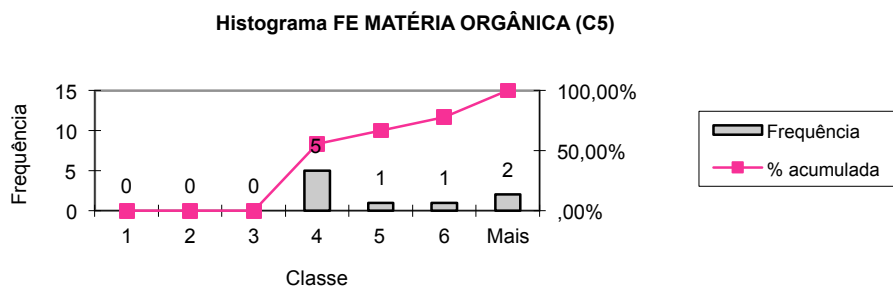
Bloco	Frequência	% acumulada	% relativa
2	1	5,56%	5,56%
4	5	33,33%	27,78%
6	10	88,89%	55,56%
Mais	2	100,00%	11,11%



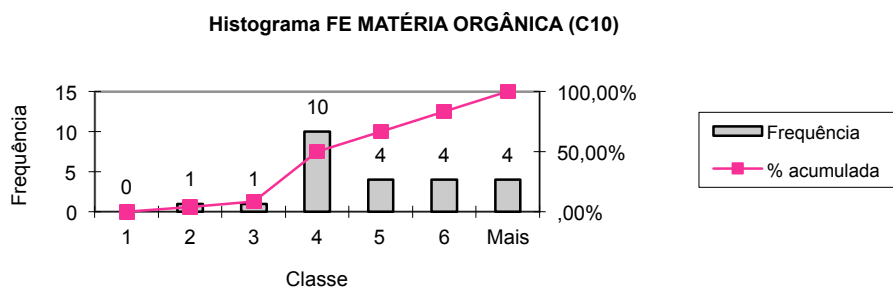
Bloco	Frequência	% acumulada	% relativa
1	0	,00%	,00%
2	2	4,76%	4,76%
3	4	14,29%	9,52%
4	12	42,86%	28,57%
5	8	61,90%	19,05%
6	10	85,71%	23,81%
Mais	6	100,00%	14,29%



Bloco	Frequência	% acumulada	% relativa
1	0	,00%	,00%
2	0	,00%	0,00%
3	0	,00%	0,00%
4	5	55,56%	55,56%
5	1	66,67%	11,11%
6	1	77,78%	11,11%
Mais	2	100,00%	22,22%



Bloco	Frequência	% acumulada	% relativa
1	0	,00%	,00%
2	1	4,17%	4,17%
3	1	8,33%	4,17%
4	10	50,00%	41,67%
5	4	66,67%	16,67%
6	4	83,33%	16,67%
Mais	4	100,00%	16,67%



Bloco	Frequência	% acumulada	% relativa
1	0	,00%	,00%
2	1	5,56%	5,56%
3	3	22,22%	16,67%
4	2	33,33%	11,11%
5	4	55,56%	22,22%
6	6	88,89%	33,33%
Mais	2	100,00%	11,11%

